

Material Packages only

OUTSIDE WALLS

Exterior walls of custom-cut, tongue and groove, 6"x6" **laminated** Cedar D profile logs, with unique drip edge, machine rounded exterior and machine planed interior finish, Emseal sealing tape, 10" Spices, Throubolt rods with nuts, washers and 1000 lbs compression springs for every corner. Rough buck frames for exterior doors and windows.

Gable Ends

7/16" OSB sheathing,
Tyvec House Wrap, 2x6" white cedar Log Siding.

ROOF SYSTEM

Engineered Roof trusses as required, 5/8" T&G OSB sheathing, tar paper, asphalt shingles with 25 year warranty. Ridge vent (Core-a-vent). Ice and water shield.

ROOF OVERHANG

Roof overhang typical, soffits finished in T&G Cedar, round soffit vents. 1"x 8" Cedar finished fascia boards.

Interior Stud Walls

Kiln dried 2" x 4" and 2" x 6" studs and plates.

WINDOWS

Kohler Vinyl windows, Low - E (argon gas filled) and 1"x4" eastern white cedar trim, on the exterior only.

PATIO DOOR

Patio door, lockset, sliding screen door, 1x4 cedar outside trim.

ENTRY DOOR

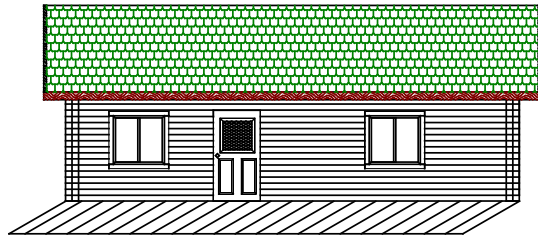
36" pre-hung Steeldoors, 1x4 cedar outside trim.

Miscellaneous shell Kit Materials.

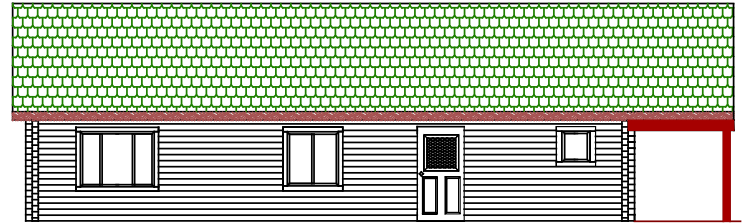
Log cutting drawing with step-by-step construction manual.

Options:

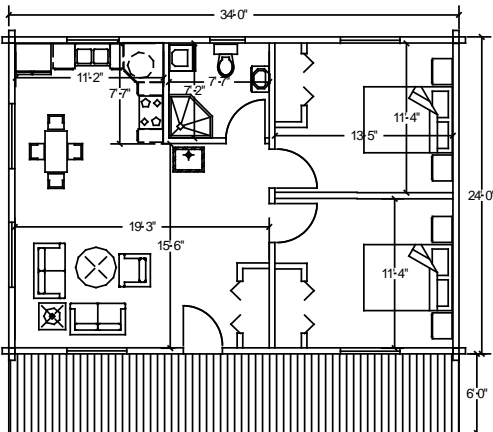
- Decks, Porches and Balcony
- Garage



Lake Home 816 Sq.Ft.
Price: \$ 43,000.00



Bungalow Homestaeder 1564 Sq.Ft.
Price: \$ 65,000.00



Special Price
until
May the 15th
2015

